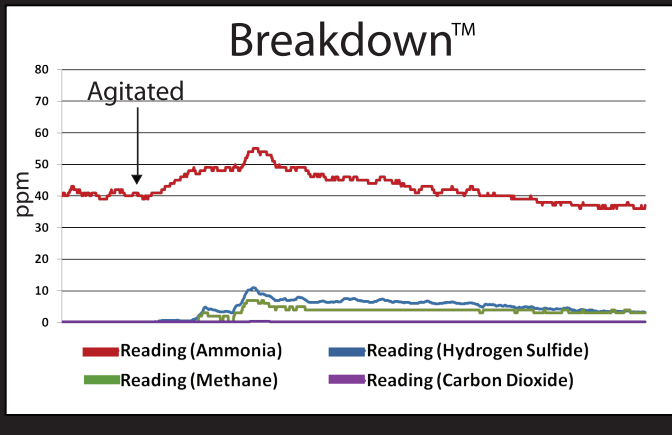
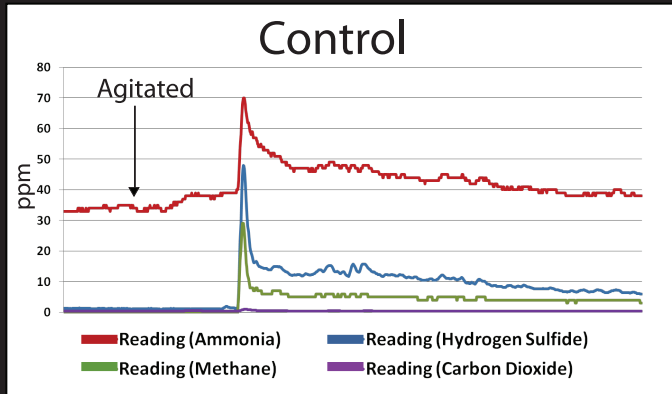


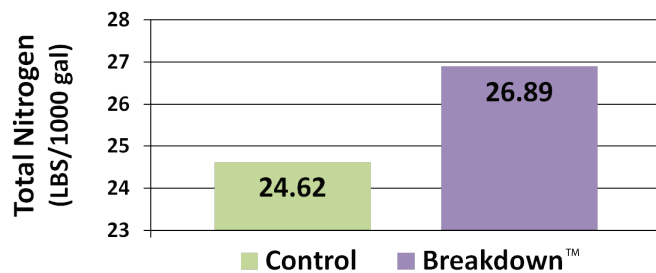
## Based on Research

Formulated with specific components to promote farm safety and plant availability.

### Time Lapse Gas Readings at Agitation



### Retained Nitrogen in Manure



## Recommendations for Use

### Liquid Manure Pits and Slurry Tanks:

**For Dairy:** 1 lb. per cow per year

**For Hogs:** 1 lb. per animal unit (1000 lbs) per year.

**For Pit Rescue:** Apply 2 lbs per 10,000 gallon of liquid at least 40 days before hauling. Must be mixed in.

For best results, apply weekly.

### Dry Manure Packs:

Apply 1 lb per 100 square feet per year.

For best results, apply weekly.

### Poultry:

**For Broilers:** 1.3 lbs per 1,000 square feet per flock.

(Equivalent to approximately 1 lb per animal unit per year)

Spread uniformly over the litter.

**For Layers:** 1 lb per animal unit (1000 lbs) per year.

(Cage or Floor Birds)

**For Specialty Fowl:** 1 to 1.5 lbs per animal unit

(1000 lbs) per year. Ducks may require more

Breakdown.

Distributed By:



**Homestead  
Nutrition**

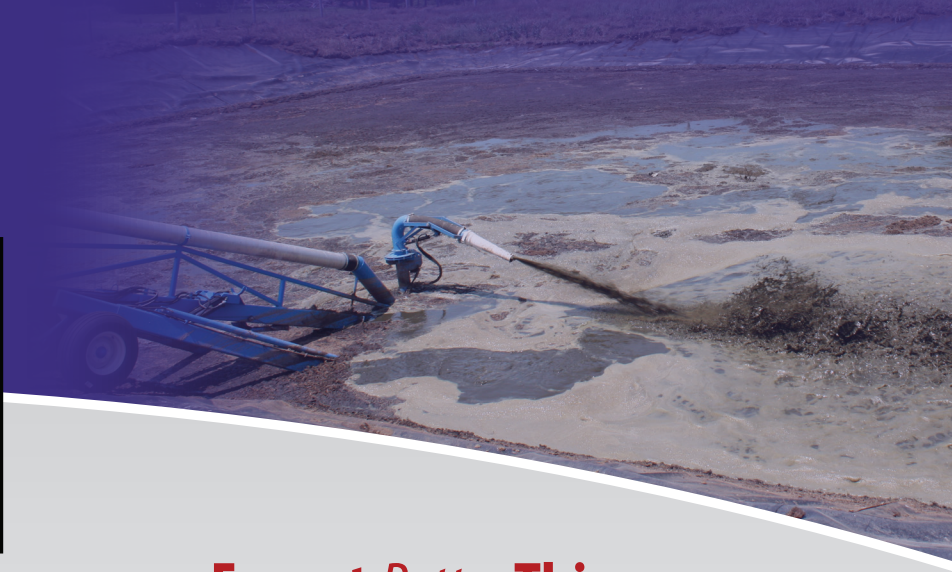
New Holland, PA

**888-336-7878**

[www.breakdownmanure.com](http://www.breakdownmanure.com)

**Breakdown™**  
Maximize Your Manure

*A manure treatment product for liquid and dry systems to control odor, break down solids and maximize the nutrient value of manure!*



**Expect Better Things  
From Your Manure**

**888-336-7878**

[www.breakdownmanure.com](http://www.breakdownmanure.com)



# Benefits

- Controls Odors
- Breaks Down Solids
- Fosters the Building of Humus
- Requires Less Agitation
- Captures Ammonia
- Retains High Levels of Plant Available Nitrogen
- Suppresses Hydrogen Sulfide Gas Production



## In Dry Systems...

Increased Composting Action  
Assimilates More Nutrients.

Easier Cleanout  
Drier Bedding  
Even Spreading



"Ever since using Breakdown™, we have not had any pipe problems. Things are flowing out of the barn better. The custom haulers commented that they don't see the solids laying in the bottom of our pit that they see in others."

Josh Akers, Duck Farmer  
Quarryville, PA

## In Liquid Systems...

Actively Breaks Down Solids  
for Uniform Manure.

Drag Lines  
Gravity Flow Systems  
Even Spreading  
More Complete Cleanout

**Breakdown™**  
Maximize Your Manure